

alfi<sup>®</sup>

## Product Instruction

Product Model SKU : CS\_AL-11

**NAURU-11**



This child seat is suitable for  
i-Size universal ISOFIX: 40-105 cm /  $\leq$  18kg  
i-Size booster seat: 100-150 cm

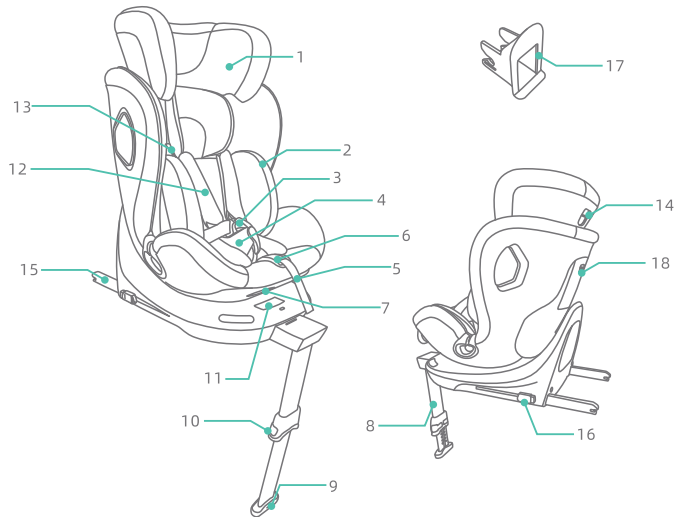
## Notice

1. Used as i-Size ECRS: This is an i-Size Enhanced Child Restraint System. It is approved according to UN Regulation No.129, for use in, i-Size compatible vehicle seating positions as indicated by vehicle manufacturers in the vehicle users' manual. If in doubt, consult either the Enhanced Child Restraint System manufacturer or the retailer.
2. Used as i-Size booster seat: This is an i-Size booster seat Enhanced Child Restraint System. It is approved according to UN Regulation No. 129, for use primarily in "i-Size seating positions" as indicated by vehicle manufacturers in the vehicle user's manual. If in doubt, consult either the Enhanced Child Restraint System manufacturer or the retailer.
3. Do not use the ECRS in seating positions where there is an active frontal airbag installed.
4. IMPORTANT - DO NOT USE FORWARD FACING BEFORE THE CHILD'S AGE EXCEEDS 15 MONTHS (Refer to instruction)

## Contents

1. Seat Composition .....	03-03
2. Safety Instructions .....	04-05
3. Response To Emergency Situations .....	06-06
4. Safety Precautions For Installation .....	07-07
5. How to Use ISOFIX .....	
5.1 How to Use ISOFIX .....	08-08
5.2 Adjusting ISOFIX .....	09-09
5.3 ISOFIX Installation and Uninstallation Guide .....	10-10
6. How to Use Support Leg .....	
6.1 Installation of Support Leg .....	11-11
6.2 Folding the Support Leg .....	12-12
7. Method of 360 Degree Rotation .....	13-13
8. Adjustment of Child Seat Inclination .....	14-14
9. Adjustment of Harness System .....	15-15
10. Adjustment of Headrest .....	16-16
11. Use of Comfort Cushion .....	17-17
12. Rearward Facing Installation Method .....	18-20
13. Forward Facing Installation Method .....	21-23
14. Forward Facing Installation Method .....	
14.1 Preparation Before Installation .....	24-28
14.2 Installation Method 1: 3-point safety belt for size range 100-150cm .....	29-29
14.3 Installation Method 2: 3-point safety belt + ISOFIX for size range 100-150cm .....	30-30
15. Removing the Child Seat Cover .....	31-31
16. Maintenance and Repair .....	32-32
17. Preservation of Seat .....	33-33
18. Cautions .....	33-33
19. FAQ .....	33-33
20. Quality Assurance .....	34-34

## 1. Seat Composition



- 1 Headrest
- 2 Comfort Cushion
- 3 Buckle
- 4 Buckle Pad
- 5 Adjusting Belt
- 6 Adjusting Device
- 7 Backrest Adjustment Handle
- 8 Support Leg
- 9 Support Leg Indicator
- 10 Support leg Adjustment Buttons
- 11 Rotation Adjusting Handle
- 12 Shoulder Belt Pad
- 13 Shoulder Strap
- 14 Headrest Adjustment Handle
- 15 ISOFIX Connector
- 16 ISOFIX Adjustment Button
- 17 ISOFIX Guide Slot
- 18 Instruction Box

Check whether any component is missing. If any component is missing, contact the vendor.

## 2. Safety Instructions

- ◆ The rigid items and plastic parts of an ECRS shall be located and installed so that they are not liable to become trapped by a movable seat or in a door of the vehicle during everyday use of the vehicle.
- ◆ Any straps holding the restraint to the vehicle should be tight, any support-leg should be in contact with the vehicle floor, any straps or impact shields restraining the child should be adjusted to the child's body, and straps should not be twisted.
- ◆ It is important to ensure that any lap strap is worn low down.
- ◆ The ECRS should be replaced when it has been subject to violent stresses in an accident.
- ◆ It is danger to make any alterations or additions to the device without the approval of the Type Approval Authority, and it is also danger not following closely the installation instructions provided by the ECRS manufacturer.
- ◆ Be sure that children are not left in their ECRS unattended.
- ◆ Be sure that any luggage or other objects liable to cause injuries in the event of a collision shall be properly secured.
- ◆ Be sure that the ECRS shall not be used without the cover.

- ◆ Be sure that the ECRS cover should not be replaced with any other than the one recommended by the manufacturer, because the cover constitutes an integral part of the restraint performance.
- ◆ Be referred to the vehicle manufacturer's handbook for the use of an “i-Size Enhanced Child Restraint System” .
- ◆ The child restraint may not fit in all approved vehicles when used in stature range above 135 cm.

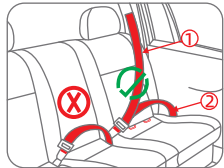
### 3. Response to Emergency Situation

- ◆ In case of an emergency, cut the seat belt and remove the child from the scene in a rapid manner.

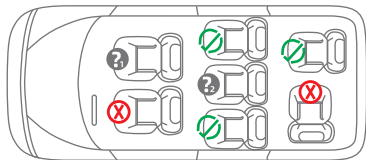
#### Installation instructions

Size range	Installation direction	Installation method
40-105cm	Rearward installation	ISOFIX+Support Leg+harness
76-105cm	Forward installation	ISOFIX+Support Leg+harness
100-150cm	Forward installation	3-point safety belt
100-150cm	Forward installation	3-point safety belt+ISOFIX

## 4. Safety Precautions For Installation



- ① Car seat belt - shoulder belt
- ② Car seat belt - lap belt
- ①+② Combined for three - point seat belt



- ✓ Correct, suitable for installation position.
- ✗ Error, inappropriate installation location.
- ❓ Can not be used in the passenger seat with the airbag activated.
- ❓ Only suitable for seats with a 3 point safety belt.

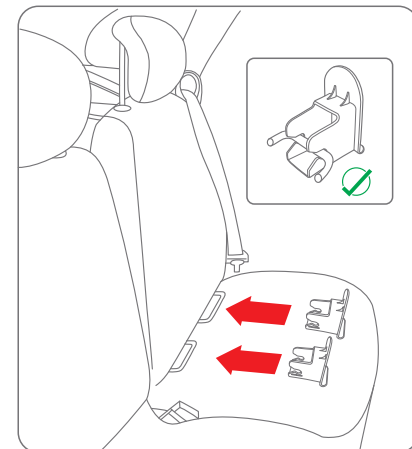
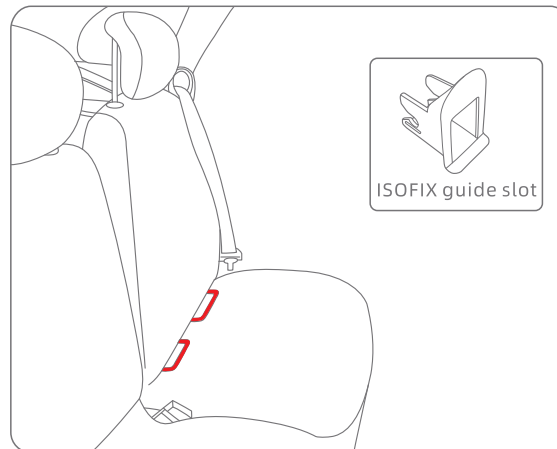


### Warning!

▲ Your child could be seriously injured if the airbag activates and hits the seat it may cause harm and even death.

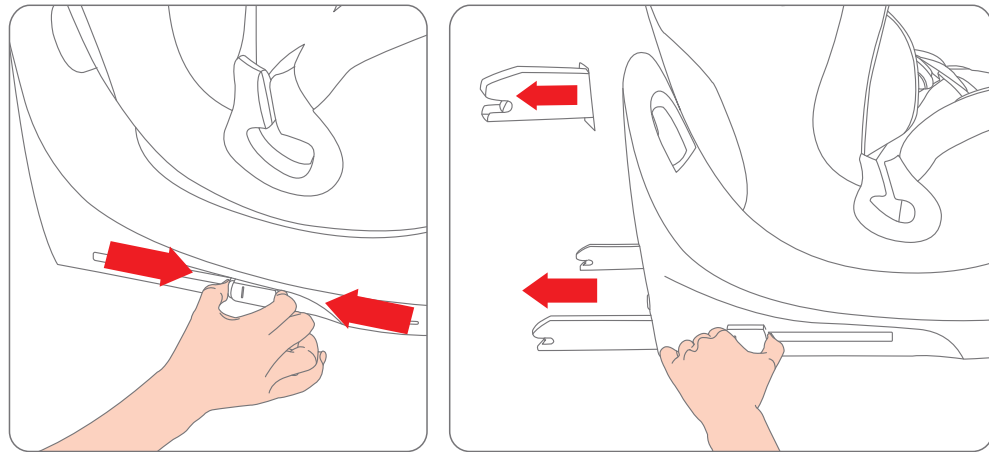
## 5. How to use ISOFIX

### 5.1 Use Method of Guide Slot



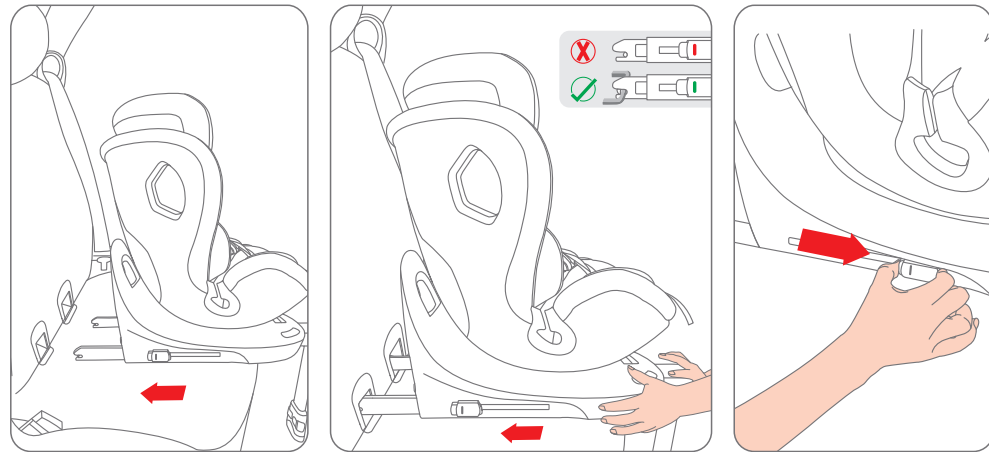
1. Find the ISOFIX anchor point in the gap between the car seat backrest and the seating surface.
2. Insert the ISOFIX guide slot into the gap between the car seat backrest and the seating surface, and connect the ISOFIX connector.

## 5.2 Adjusting ISOFIX



Hold and press the ISOFIX adjustment button at the same time and slide rearward to adjust the ISOFIX to the longest position.

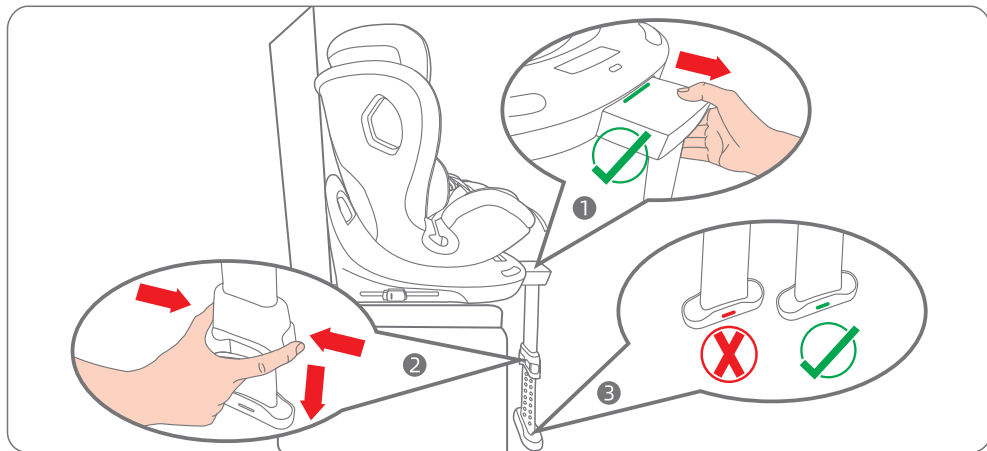
## 5.3 ISOFIX Installation and Uninstallation Guide



1. Put both ISOFIX connectors into the guide slot and connect them to the ISOFIX anchor points of the car.
2. Push the base towards the car seat back to fit tightly, and when the ISOFIX indicator shows green, it means it is installed correctly.
3. The steps for removing the ISOFIX are the opposite way of fixing the ISOFIX.

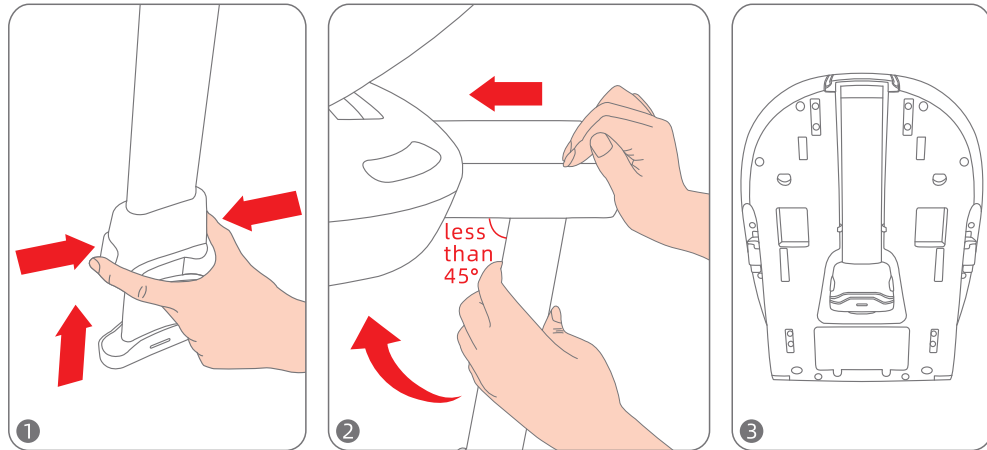
## 6. How to Use Support Leg

### 6.1 Installation of Support Leg



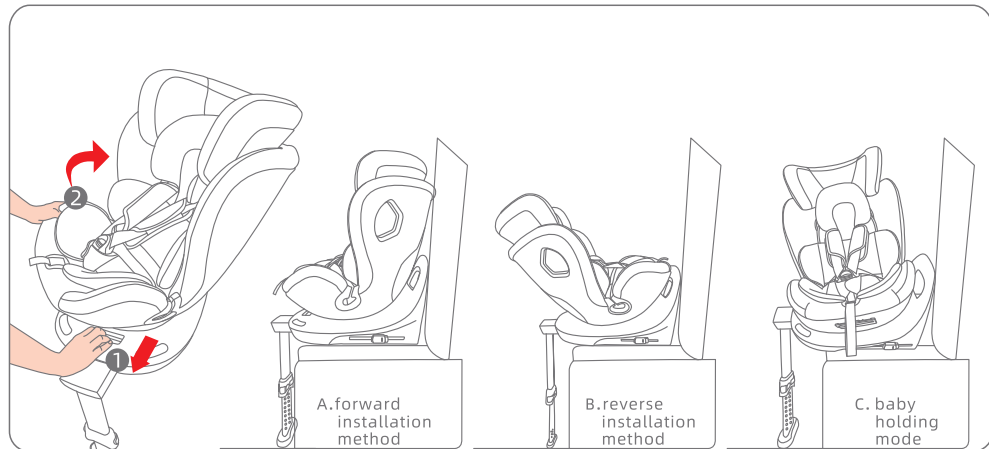
1. Unfold the support leg and pull it outward until you see the green mark (Figure 1).
2. Press the adjustment button on the support leg (refer to Figure 2) and pull down the inner tube of the support leg until it hits the floor of the car (the support leg has 21 adjustment segments) and when the support leg displays green (refer to Figure 3), it indicates that the support leg is in place.

### 6.2 Folding the Support Leg



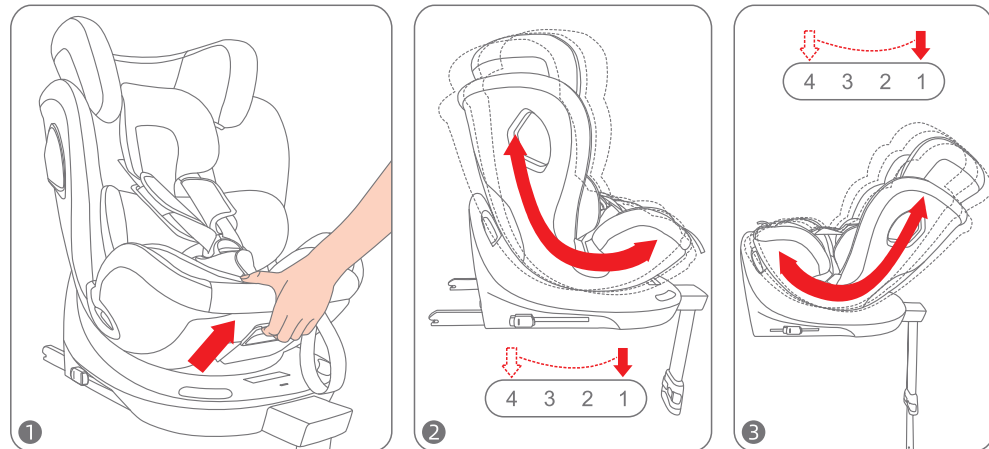
1. Press and hold the adjustment button on the support leg and push the inner tube of the support leg upward to shorten the support leg (refer to Figure 1).
2. Fold the support leg inward, forming an angle of less than 45° with the child seat base, and push it inward (refer to Figure 2) to the support leg. (Tip: when the angle is greater than 45°, the support leg can not be pushed)
3. Fold the support leg to the bottom of the child seat base (refer to Figure 3).

## 7. Method of 360 Degree Rotation



1. Pull the Rotation Adjusting Handle on the base outward (refer to Figure 1), and turn the child seat (refer to Figure 2) to adjust the status of the child seat.
2. Figure A shows the forward installation method. After rotating to 180° (refer to Figure B), it will be in the reverse installation method. After rotating to 90° and 270° (refer to Figure C), it will be in the baby holding mode (which is only applicable when the car is stopped; **This function (Figure C) should not be used when the car is moving.**)

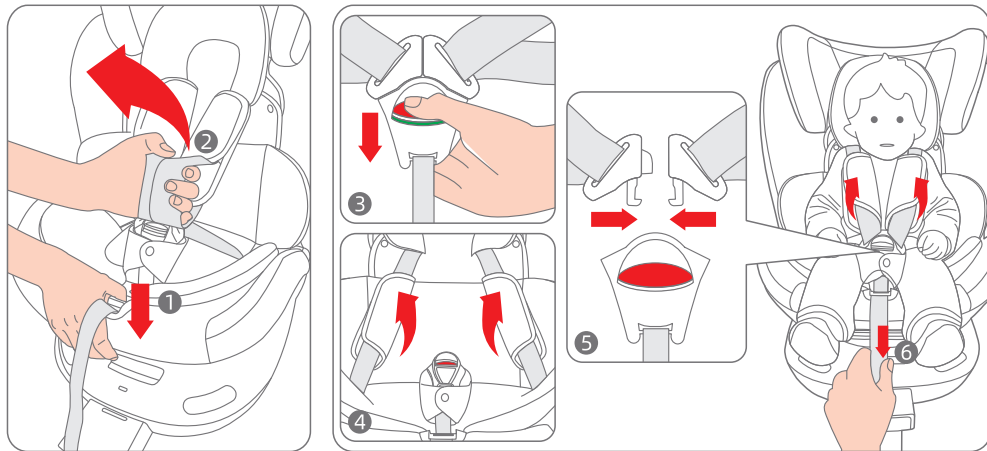
## 8. Adjustment of Child Seat Inclination



1. Pull outward the backrest adjustment handle located in the lower part of the seat (refer to Figure 1), in the meanwhile pulling or pushing the child seat, you can adjust the inclination of child seat.
2. When adjusting to the corresponding inclination position, release the adjustment handle, you may hear the sound of "click", and then it means that the angle of the child seat is fixed in place.
3. Body of the child seat can be adjusted to 4 positions (refer to Figure 2 and Figure 3).

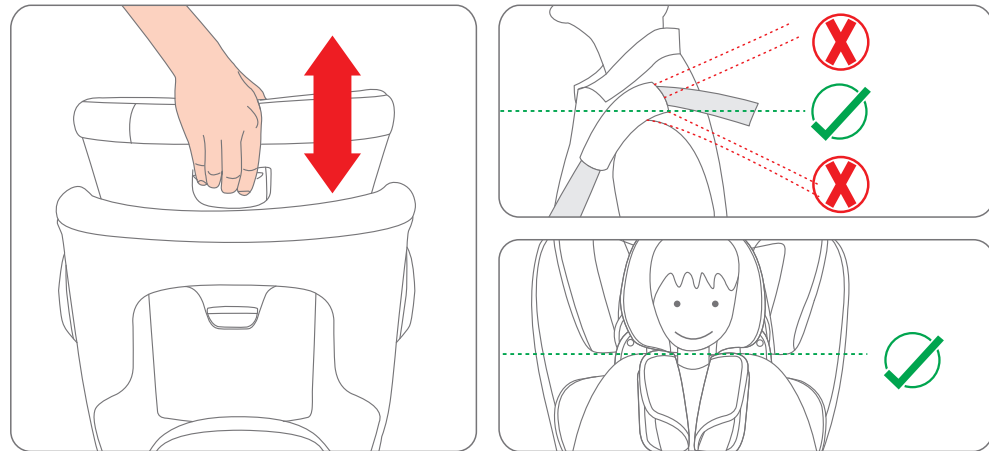


## 9. Adjustment of Harness System



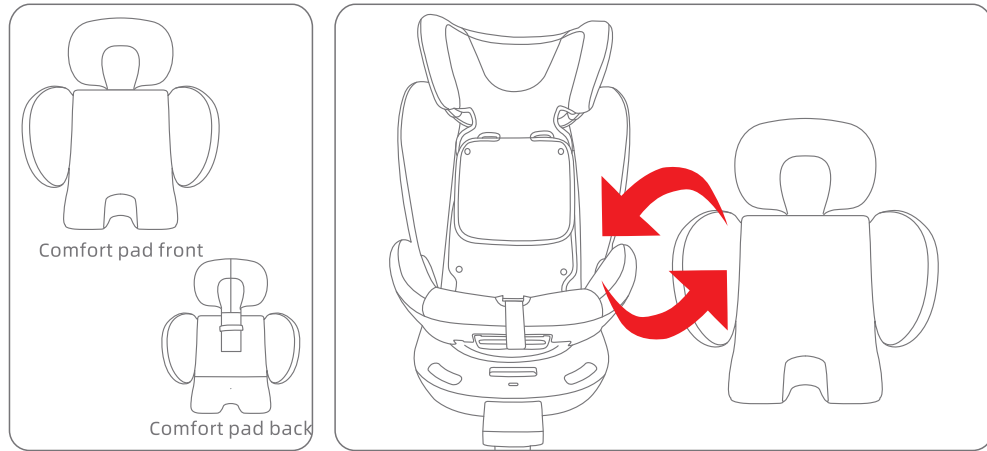
1. Press the adjusting device with one hand without releasing (refer to Figure 1), and pull the two shoulder straps outward with the other hand (refer to Figure 2, please do not pull the shoulder belt pad) to adjust the seat belt slack condition.
2. Press the red button to open the buckle (refer to Figure 3) and place the shoulder belts on both sides of the child seat (refer to Figure 4).
3. Put the baby into the child seat, combine the left and right inserts together (refer to Figure 5). Insert them into the buckle, when you hear the sound of "click" and the buckle appears green, it indicates that the safety buckle has been fastened completely.
4. Pull the adjusting belt to tighten the harness system (refer to Figure 6). It should restrain as tight as possible but not to the point where the child is uncomfortable.

## 10. Adjustment of Headrest



1. Before adjusting the headrest, the harness system must be adjusted to the slack state.
2. The height of headrest can be adjusted by pressing the headrest adjustment handle, in the meanwhile pulling the handle up and down. (There are 12 segments for the adjustment of the headrest).
3. Make sure the shoulder belt are even or slightly higher than the child's shoulder. If the head rest is between the two gears, please use the higher position.

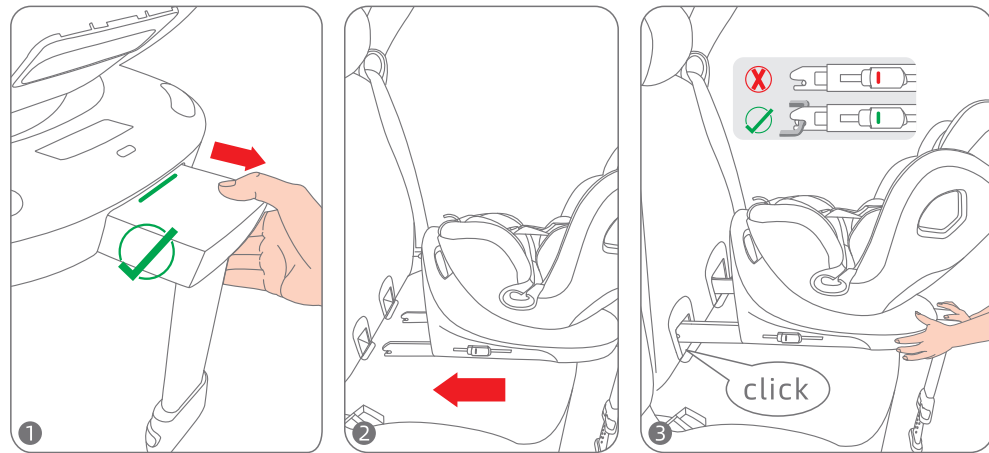
## 11. Use of Comfort Cushion



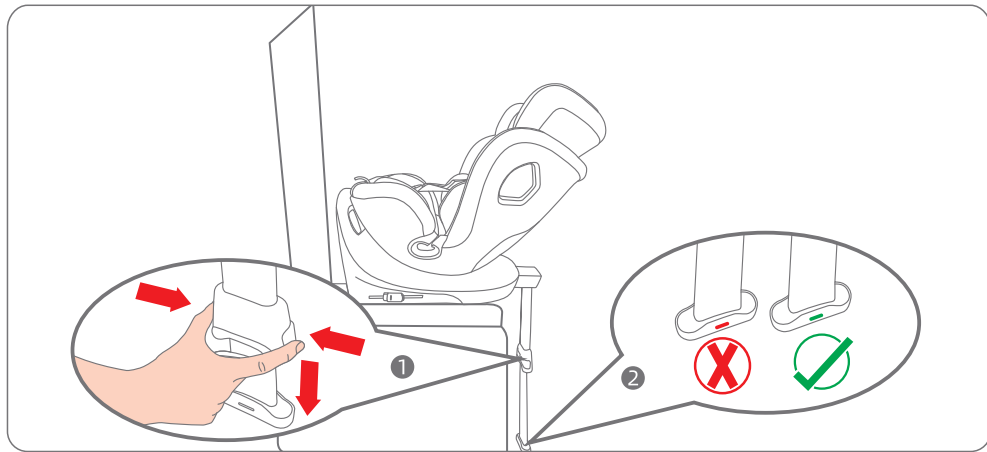
1. For child with height of 40-60cm: Use this comfort cushion.
2. For child with height with over 60cm: Do not use this comfort cushion.

## 12. Rearward Facing Installation Method

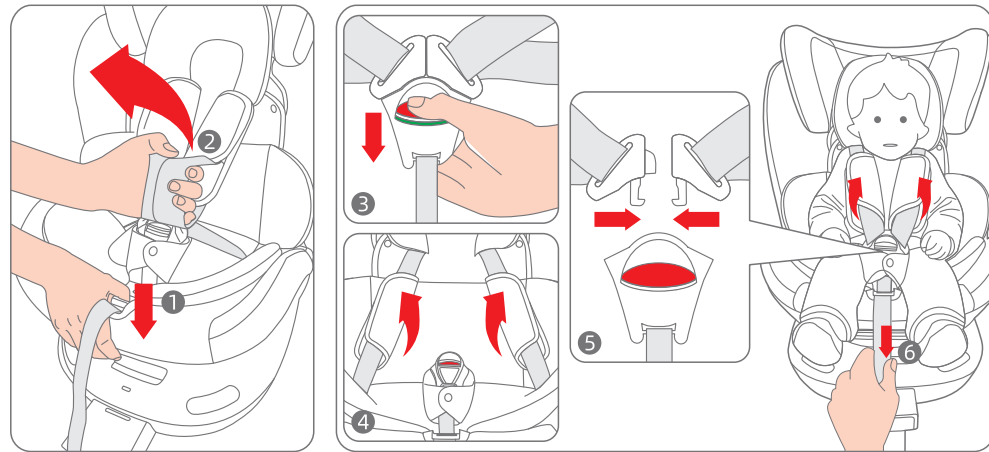
Installation Method: ISOFIX + support leg + harness for size range 40-105cm



1. Follow the operation described in item 5 to install the ISOFIX.



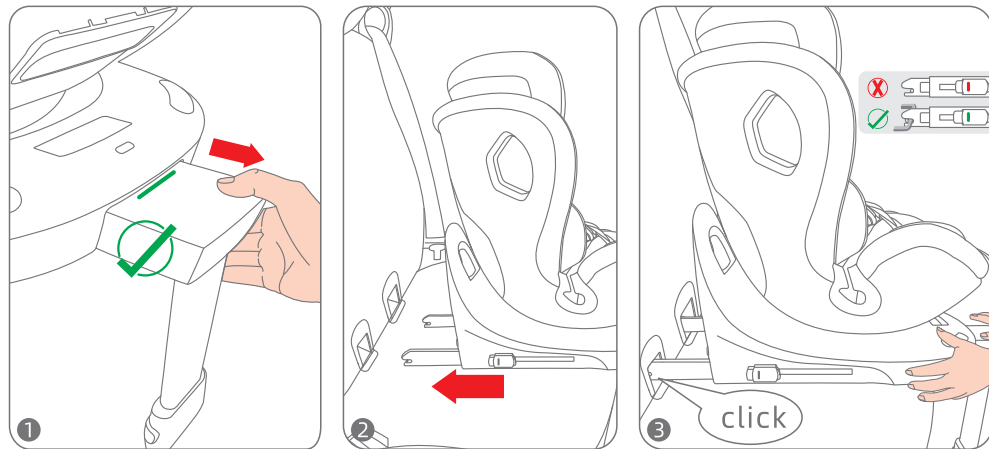
2. Follow the operation described in item 6.1 to install the support leg.
3. Adjust the child seat to the rearward facing status according to operation described in item 7.



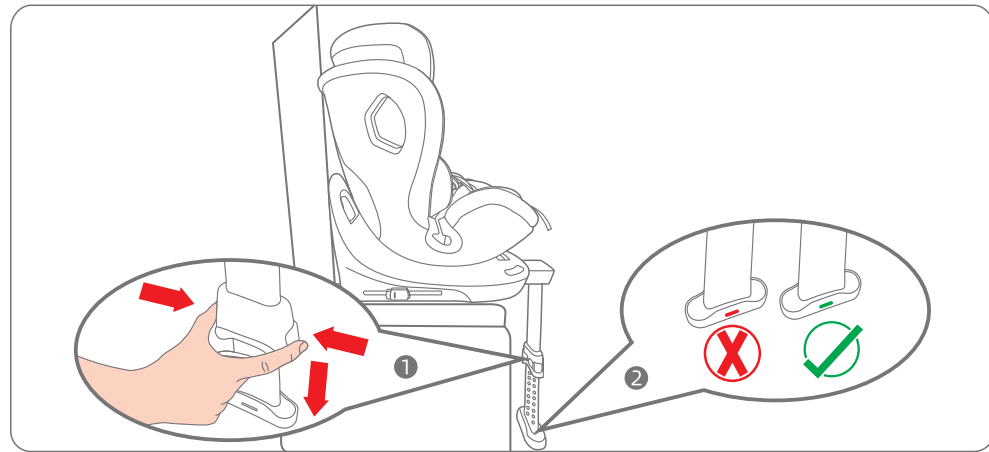
4. Install your child in the child seat according to operations described in item 8, 9 and 10.

### 13. Forward Facing Installation Method

Installation method: ISOFIX + support leg+ harness for size range 76-105cm

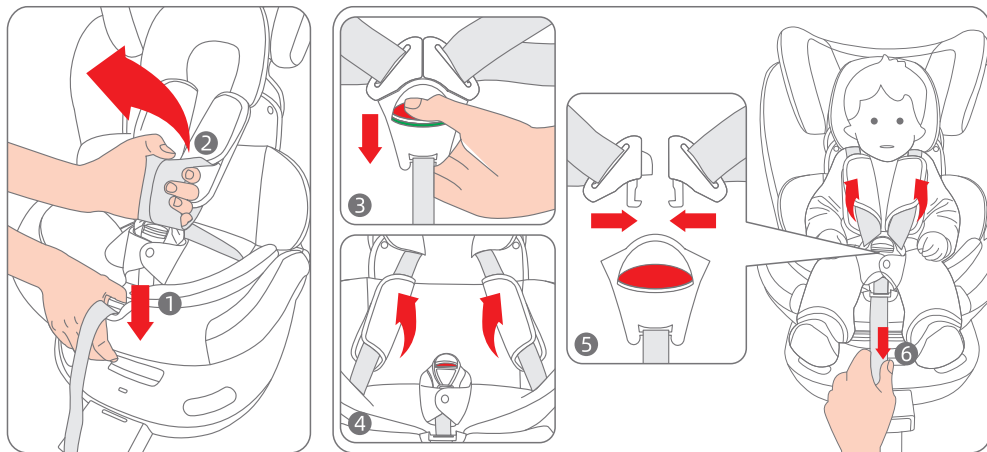


1. Follow the operation described in item 5 to install the ISOFIX.



2. Follow the operation described in item 6.1 to install the support leg.

3. Adjust the child seat to the forward facing status according to operation described in item 7.



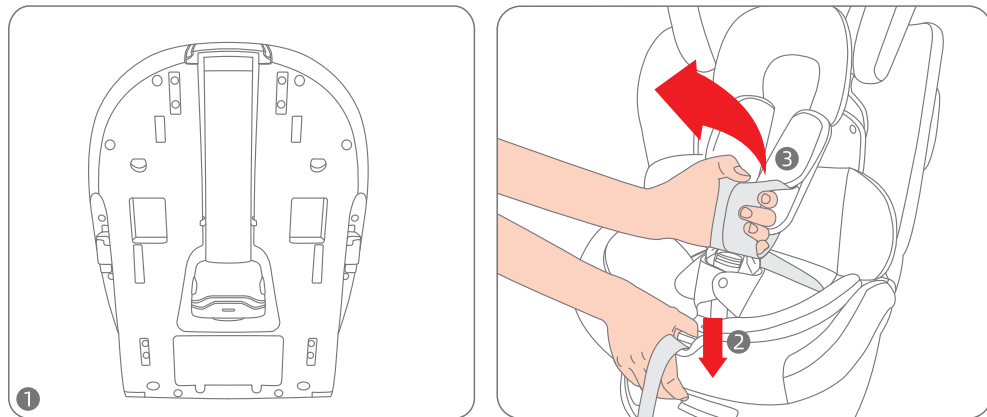
4. Install your child in the child seat according to operations described in item 8, 9 and 10.

## 14. Forward Facing Installation Method

Installation method 1: 3-point safety belt for size range 100-150cm;

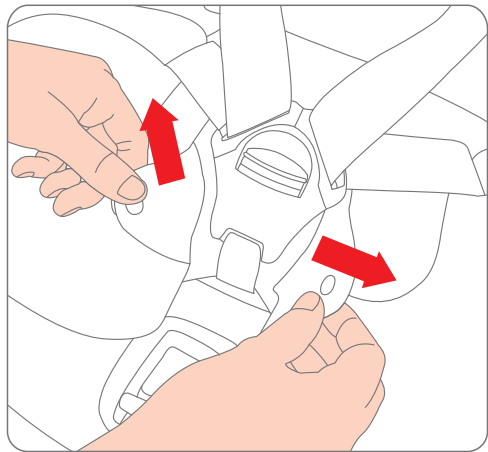
Installation method 2: 3-point safety belt + ISOFIX for size range 100-150cm

### 14.1 Preparation Before Installation



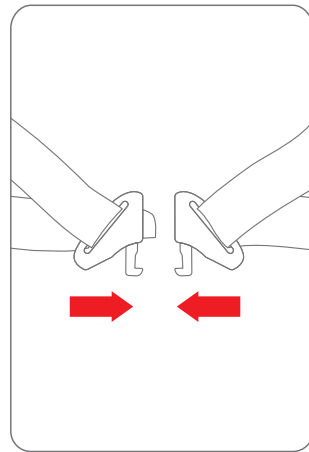
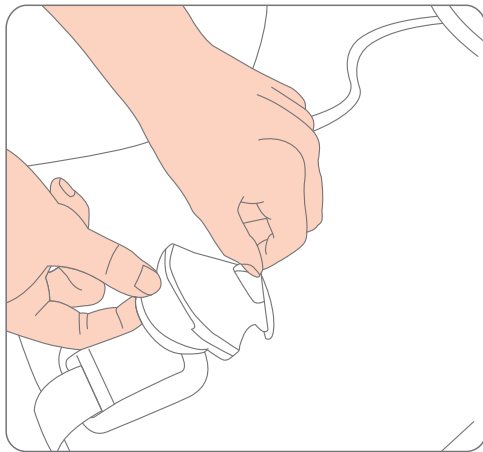
1. Put the support leg into the storage slot of the base following the operation described in item 6.2 (refer to Figure 1).

2. Loosen the harness system following the operation described in item 9.

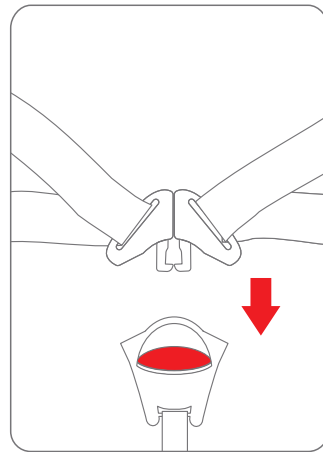


3. Open the buckle and remove the buckle pad.

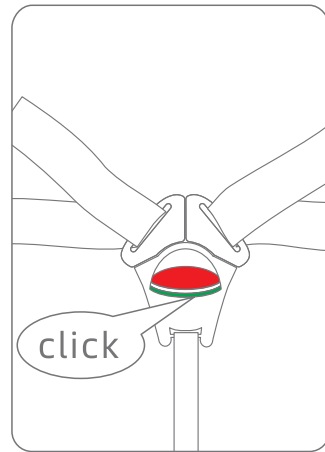
4. Turn up the seat cushion cover and put the buckle through the cover hole.

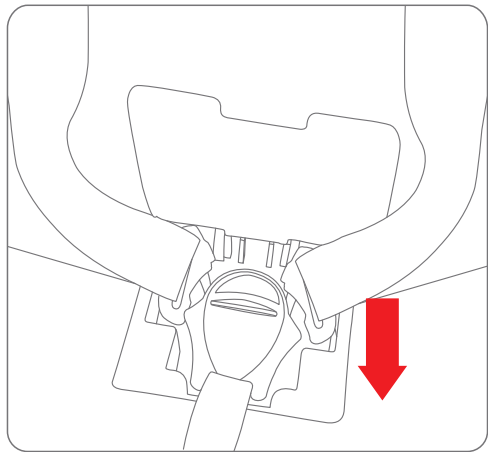


5. Put the left and right inserts together.



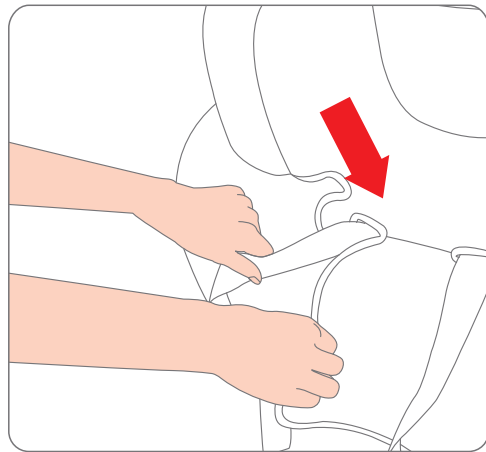
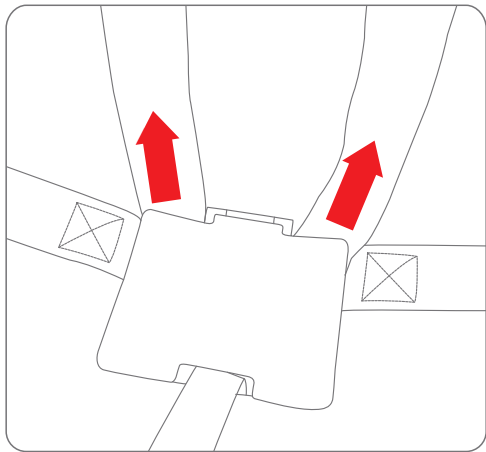
6. Fasten the buckle, and when you hear the sound of "click" and the buckle appears green, it means that the buckle is fastened correctly.



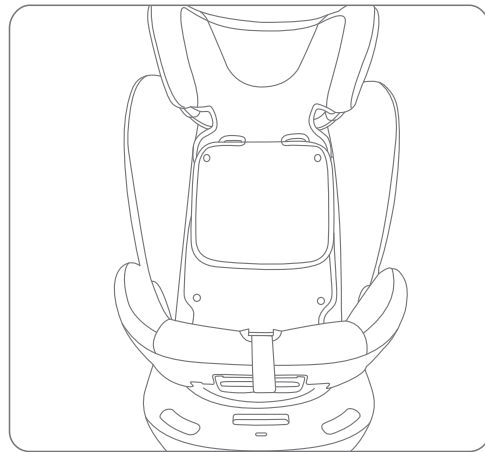


7. Open the cover of the storage box and place the shoulder straps and buckle into the box.

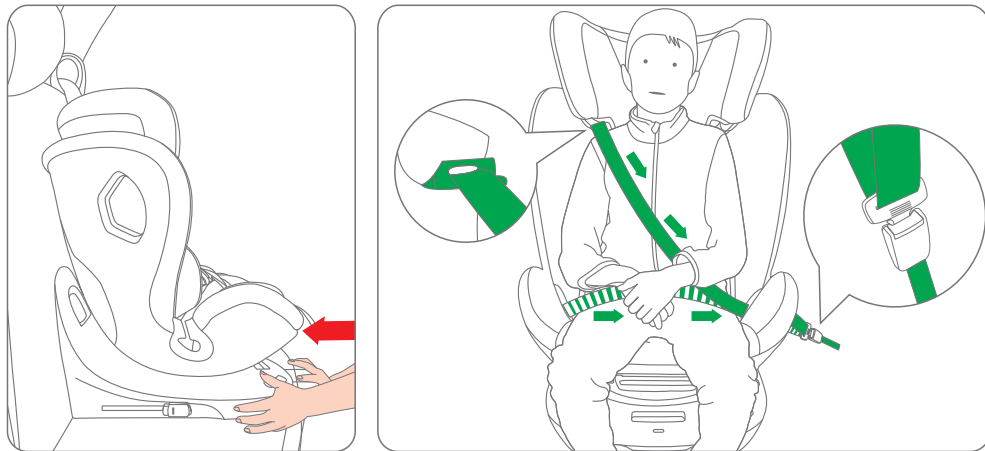
8. Pull the shoulder straps out of the slit.



9. Hide the shoulder straps and shoulder pads behind the seat back fabric cover.

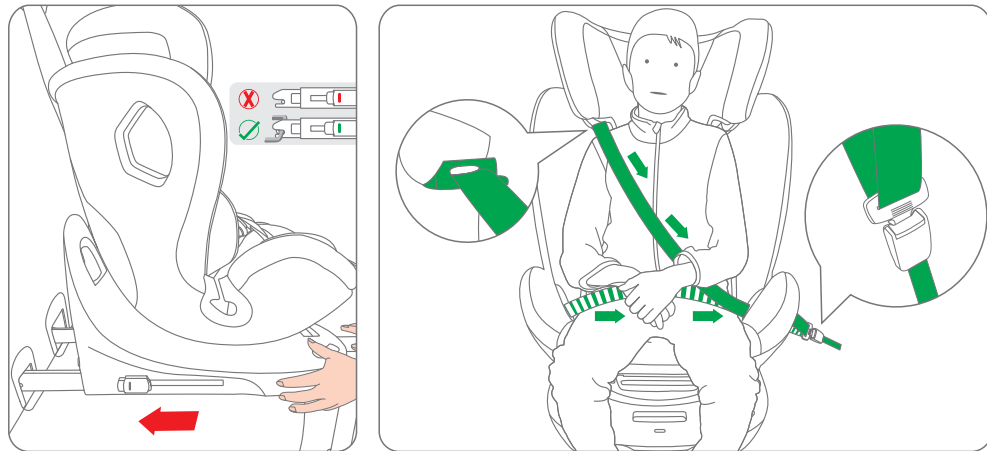


## 14.2 Installation method 1: 3-point safety belt for size range 100-150cm



1. Put the child seat on the car seat and push the base to the car seat back closely.
  2. Put the shoulder strap of the car seat belt through the shoulder belt guide hook under the headrest of the child seat and the lap belt through the lab belt guide hook on both sides of the child seat and fasten the 3-point safety belt buckle, the seat belt is forbidden to twist.
- Tips :
- a. Make sure the bottom of the headrest to be even or slightly higher than the child's shoulder. If the headrest is in the middle of the two gears, please use the higher position of the gear.
  - b. It is extremely dangerous to use any load bearing contact points other than those described in the instructions and marked in the child restraint system.

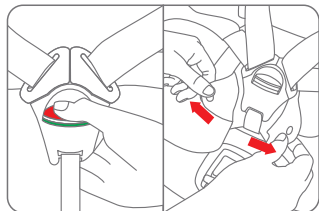
## 14.3 Installation method 2: 3-point safety belt + ISOFIX for size range 100-150cm



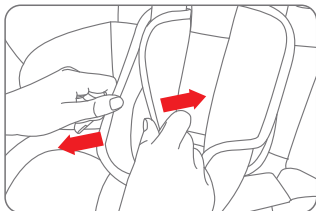
1. Put the child seat on the car seat, put the two ISOFIX connectors into the guide slot, connect with the ISOFIX anchor point of the car, and during the process, you may hear the sound of "click" twice, and when the ISOFIX indicator shows green, it means the installation is in place.
  2. Put the shoulder strap of the car seat belt through the shoulder belt guide hook under the headrest of the child seat and the lap belt through the lab belt guide hook on both sides of the child seat and fasten the 3-point safety belt buckle, the seat belt is forbidden to twist.
- Tips :
- a. Make sure the bottom of the headrest to be even or slightly higher than the child's shoulder. If the headrest is in the middle of the two gears, please use the higher position of the gear.
  - b. It is extremely dangerous to use any load bearing contact points other than those described in the instructions and marked in the child restraint system.



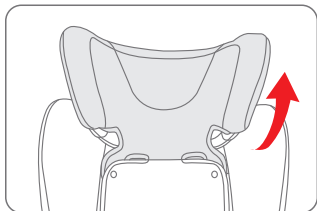
## 15. Removing the Child Seat Cover



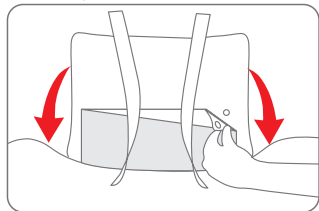
1. Press the button to unfasten the harness system and remove the buckle pad..



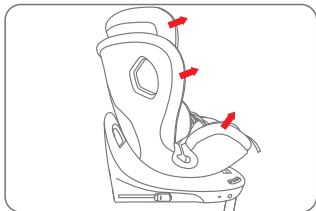
2. Remove the shoulder pads from the shoulder straps separately.



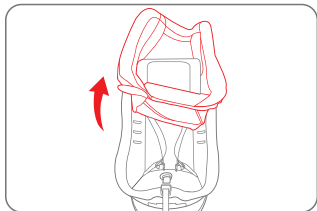
3. Remove the headrest fabric cover.



4. Open the concealed buckle of the seat cover.



5. Pull the cover according to the direction shown.



6. Remove the seat cover.

## 16. Maintenance and Repair

- ◆ Do not iron.
- ◆ Please lay flat to dry it in a cool place.
- ◆ Do not use bleach or dry clean.
- ◆ Wash in water temperature below 30 degrees.
- ◆ Do not twist and dry vigorously, excessive twisting and drying may leave wrinkles.
- ◆ After removing the small seat support, please store it out of the reach of children.
- ◆ Do not use undiluted neutral cleaners, gasoline or other organic solvents to clean the child restraint system, as the same may cause damage to the restraint system.
- ◆ When the child restraint is not used for a long period, please remove the child seat from the car seat and store it in a cool place out of the reach of children.



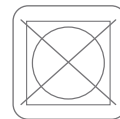
Wash in cold water



Do not bleach



Dry clean  
(all dissolvable  
except trichloroethylene)



Do not  
tumble dry



Do not iron

## 17. Preservation of Seat

- ◆ Please always check whether the parts of the seat are complete or not and whether the seat is in good condition or not, to reduce the chance of accidents.
- ◆ Before use, please pull the webbing on the buckle to check if the buckle is loose.
- ◆ Do not place the seat in a cold or hot, humid environment for a long time.
- ◆ Please keep this Instruction for reference at any time.
- ◆ Seat cover: Refer to the wash markings sewn on the seat cover before washing.
- ◆ Shell: Wipe with a damp cloth

**After an accident:** After a violent collision or accident, replace the seat with a new one, or contact the dealer or manufacturer if you have any other problems.

## 18. Cautions

- ◆ In order to avoid the risk of suffocation, please store the plastic packaging out of the reach of children. In order to protect the environment, if you no longer use this product, please recycle different materials in accordance with the local regulations.

## 19. FAQ

- ◆ If you have any questions, please contact your local distributor. Make sure you have obtained the following information:
  - 1.The model and seat type of the car used to install the child car seat.
  - 2.Your child's height, age and weight.

## 20. Quality Assurance

We guarantee that this product is manufactured in accordance with the current installation standards and quality requirements for this product in China and Europe, and that the product is free of any material and manufacturing defects at the time of purchase, and that the product has undergone various quality tests during the manufacturing process, and if, even after these checks, you still find material or manufacturing defects (under normal use in compliance with the instruction manual), we will fulfill the terms of the warranty. In such a case, please contact your dealer.

The warranty would be void in the following cases:

- 1.The product is used for other purposes than those described in the Instruction Manual.
- 2.The product has been repaired by a dealer not authorized by our company.
- 3.The product is bought from the dealer or the importer who can not provide the original purchase receipt.
- 4.The product has been repaired by a third party or by a manufacturer that we have not authorized.
- 5.The defect of the product is caused by improper use or maintenance negligence or collision damage to the car seat cover and shell, etc.
- 6.The normal wear and tear or breakage of some parts under daily use (including: rotating and moving parts, etc.).
- 7.The warranty is valid only for the first buyer, not for the transfer.