

alfi.

"Choosing the best for your baby"

alfi.

Travii Compact Fold



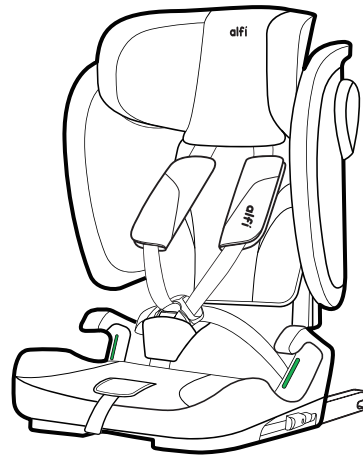
i-SIZE
ECE R129

76-150cm

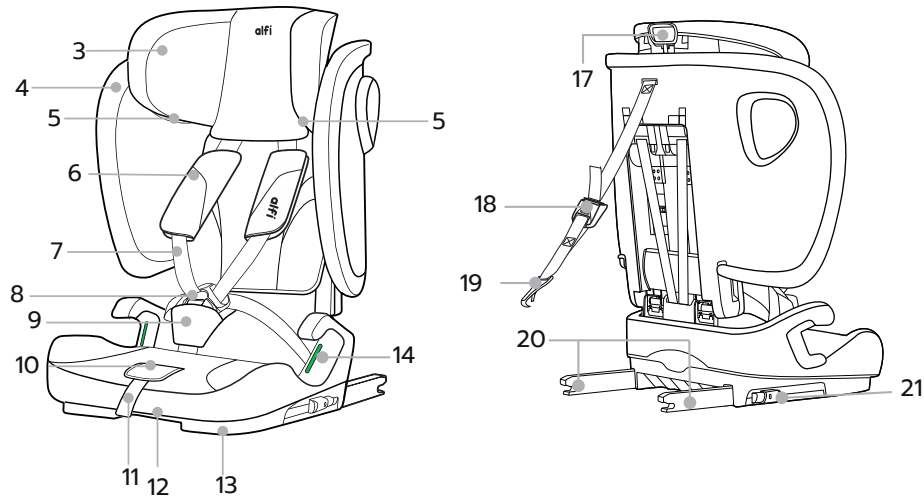


Line : @alfibaby

สแกนเพื่อดู
วิดีโอการติดตั้ง

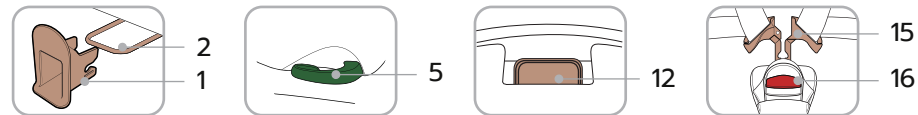


PARTS IDENTIFICATION

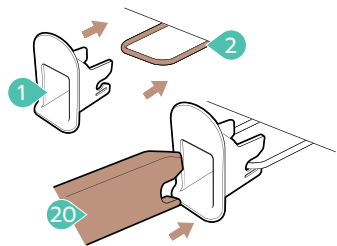


- 1 ISOFIX Insertion Aids
- 2 ISOFIX Fastening Points (vehicle)
- 3 Headrest
- 4 Seat Cover
- 5 Belt Guidance
- 6 Shoulder Pads
- 7 Shoulder Straps
- 8 Harness Buckle
- 9 Crotch Pad
- 10 Adjustment Button
- 11 Adjustment Strap
- 12 Recline Handle

- 13 Base
- 14 Belt Guidance
- 15 Buckle Tongues
- 16 Red Release Button
- 17 Headrest Height Adjuster
- 18 Top Tether Adjuster
- 19 Top Tether Clip
- 20 ISOFIX Locking Arms
- 21 ISOFIX Buttons

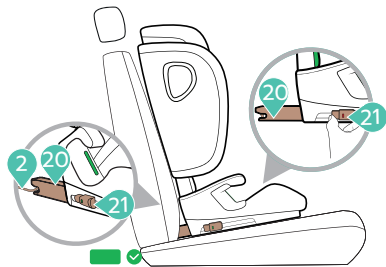


USING



ISOFIX 1

Top Tether 2

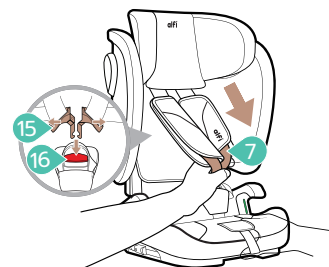


1

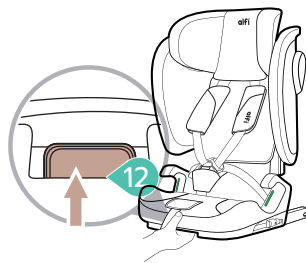
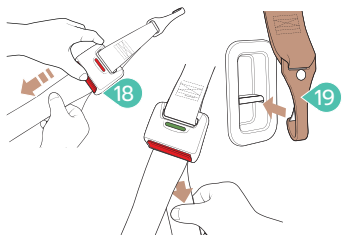
3 Seat Angle



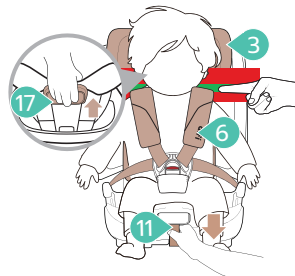
First Level-Fifth Level 3



4 Place The Child On



12

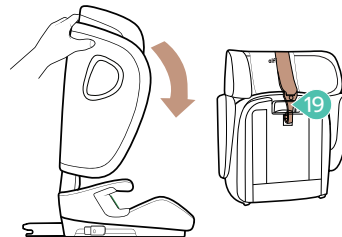


3

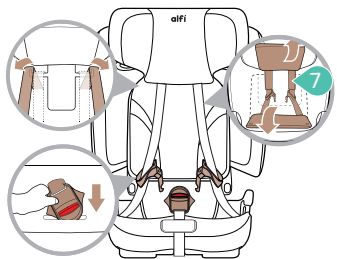
6

11

17

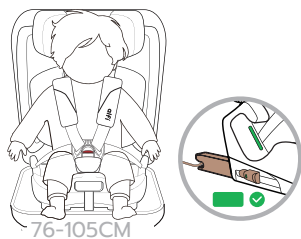
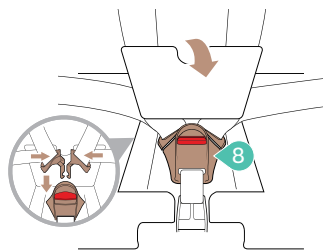


5 Folding

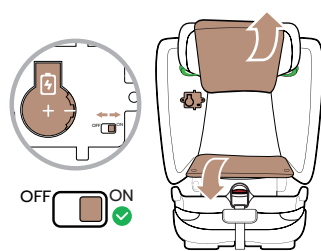
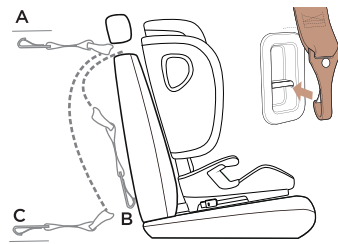


Storing the 5-Point Harness 6 6

Installation 7 7

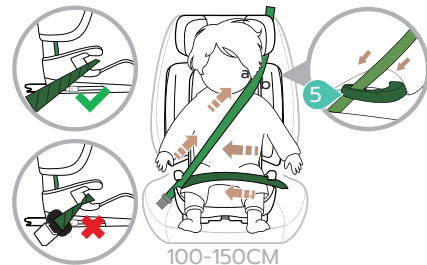
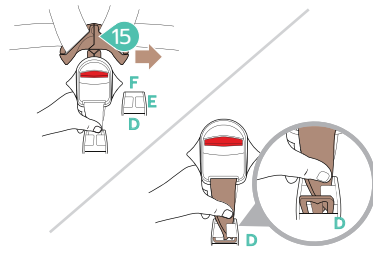


76-105CM



OFF ON

Organize 8 8



100-150CM



APPROVAL

These instructions use the following symbols:

Symbol	Keyword	Explanation
	DANGER!	RISK of severe personal injury
	WARNING!	RISK of minor personal injury
	CAUTION!	RISK of material damage
	TIP!	Useful notes

The Travii Compact Fold is exclusively intended to secure your child in your vehicle.

Tested and approved according to ECE R129		
Body Size	Installation method	Installation Direction
76-105cm; ≤18kg	ISOFIX+Top Tether + Harness	Facing for Fowards
100-150cm	Adult Safety-Belt+ISOFIX Adult Safety-Belt only	

*ECE = European Standard for Child Safety Equipment

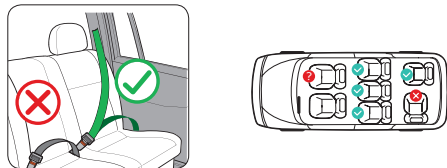
The child safety seat has been designed, tested and approved according to the requirements of the European Standard for Child Safety Equipment (ECE R129/03).

The seal of approval "E" (in a circle) and the approval number are located on the orange approval label (sticker on the child safety seat).

USE IN THE VEHICLE

Please refer to the vehicle handbook information about vehicle seats which are certified for the use of children's restraining systems according to ECE R16.

During use, be sure to observe any restrictions relating to airbags.



This ECRS is suitable for seat belt models equipped with the 3-point seat belt that has passed the ECE R16 requirement and is not suitable for models only equipped with 2-point seat belts.

If you need to install the seat in the front passenger seat, please ensure that the airbag is deactivated. Airbags are fatal hazards to young childrens.

USING

1. ISOFIX

1. If your vehicle is not fitted with **ISOFIX Insertion Aids (1)** as standard, clamp the two **ISOFIX Insertion Aids (1)**, which are included in the scope of delivery of the seat, with the opening pointing upwards to the two **ISOFIX Fastening Points (2)** of your vehicle. If you don't have **ISOFIX Insertion Aids (1)**, please ignore this step.

TIP! The ISOFIX fastening points are located between the surface and the backrest of the vehicle seat.

2. Press the **ISOFIX Buttons (21)** to push out the two **ISOFIX Locking Arms (20)** from the seat base.

3. Push back the child safety seat until you hear a clicking sound then on both sides of the ISOFIX indicators turn into green safety color.

4. Move the child safety seat backwards to against the vehicle seat, to confirm the child safety seat is firmly against the vehicle seat.

TIP! Release button towards each other to loosen the ISOFIX fastening points on both sides. Move the ISOFIX locking arms back into the seat base, it can protect ISOFIX.

2. Top Tether

1. Pull out the top tether strap by pressing the **Top Tether Adjuster (18)** button.
2. Pull the top tether long enough to hang the **Top Tether Clip (19)** on the fixed point, which is on the back of the vehicle seat.
3. Make sure the top tether strap is tightened up and the **Top Tether Adjuster (18)** indicator turns into green.

3. Seat Angle

The seat shell of the Travii Compact Fold can be used in first to fifth level position facing forwards:

1. Pull the **Recline Handle (12)** up, then the seat can be adjusted.
76-150CM : facing forwards installation, use first to fifth level.

4. Put The Child In

1. Loosen the **Shoulder Straps (7)** by pressing the **Adjustment Button (10)** and pull both **Shoulder Straps (7)** forwards, loosen it as much as possible.

2. Press **Red Release Button (16)** to open the **Harness Buckle (8)**. Place child in child safety seat.

3. Bring both **Buckle Tongues (15)**. Lock buckle tongues in **Harness Buckle (8)**, until they engage with a clicking sound.
4. Pull the **Headrest Height Adjuster (17)**, select the correct height of the **Headrest (3)** and engage it in position that fits your child by releasing the adjuster.
5. Adjust the **Headrest (3)** to proper position. Make sure the distance between child's shoulder and the bottom of the headrest is lower than one finger.
6. Pull the **Adjustment Strap (11)** until the strap lies flat and snug on your child's body. Make sure that the shoulder straps slightly higher or equal to child's shoulders.

⚠ WARNING! Before each journey, in order to ensure your child's safety, make sure that the following conditions are met.

The child safety seat is fastened in the **ISOFIX Fastening Points (2)** on both sides with the **ISOFIX Locking Arms (20)** and both **ISOFIX Buttons (21)** are fully green;

The child safety seat is securely fastened; The harness of the child safety seat is fitted snugly to the child's body without being

constricting and should not be twisted; The **Shoulder Straps (7)** are correctly adjusted and the straps are not twisted; The **Shoulder Pads (6)** are in the correct position on your child's body; The child safety seat is facing in the right direction for your child's age/size; The **Buckle Tongues (15)** are inserted into the **Harness Buckle (8)**.

⚠ DANGER! If your child tries to press the **ISOFIX buttons** or the **red release button**, prevent the child from doing so immediately. Check whether the child safety seat is correctly fastened and ensure that your child is correctly secured. Explain to your child the dangers associated with their actions.

5. Folding

The backrest can be adjusted to 90 degrees and 105 degrees. Pull the **Headrest Height Adjuster (9)** then adjusting the **Headrest (1)** to a third level height, hold the **Base (13)** and pushes the backrest forward about 90 degrees until it can cover the base entirely. If you want to recover, push the backrest to the upright position.

When folding the **Top Tether Clip (19)** must be fastened at the connecting bar.

6. Storing the 5-point harness

Once the child reaches a height of 100cm, the 5-point safety harness should be stored away and the child should be secured with the adult safety-belt.

1. Loosen the **Shoulder Straps (7)** by pressing the **Adjustment Button (10)** and pull both shoulder straps forwards. Loosen it as much as possible.
2. Open the **Harness Buckle (8)**. Remove **Crotch Pad (9)** and **Shoulder Pads (6)**.
3. Remove elastic from base.
4. Lift up the **Seat Cover (4)**, pull down **Harness Buckle (8)** across **Seat Cover (4)**. Re-connect the **Harness Buckle** and store the buckle into the storage.

Reattach the 5-point harness: Follow the steps for (store 5-point harness) in reverse order.

7. Installation

Facing Forwards (76-105cm) Installation
Install the child safety seat with **ISOFIX+Top Tether** (refer to page 3)

Loosen the top tether, (refer to 2) as shown. Pull the top tether long enough to hang the **Top Tether Clip (19)** on the fixed point, which on the back of the vehicle seat, the position of the fixed point are shown in the picture (one of the A/B/C positions).

Make sure the top tether strap is tightened up and make sure the **Top Tether Adjuster (18)** turns into green safety color. The **DIDI** stops.

⚠ CAUTION! For the safety of your child, the top tether must be tightened up during driving.

Facing forwards (100-150cm) Installation
Store 5-point Harness (Refer to page 5).

Install the child safety seat with **ISOFIX+adult safety-belt** (refer to page3). If you don't have **ISOFIX**, please ignore this step. Install the child safety seat with **adult safety-belt** only.

Pull out the belt from the belt **ALR (Automatic Locking Retractor)**. The shoulder belt through the same side of **Belt Guidance (5)** on headrest, then pull the shoulder belt and lap belt together through the other **Belt Guidance (14)** on the seat base.

Lock the tip of the buckle into the vehicle seat buckle with a clicking sound. Follow the direction of arrow to tighten belt, and put redundant belt into ALR. Shake the child safety seat to make sure it is securely attached.

⚠ WARNING! The adult safety-belt must not be twisted or have their places changed.

ⓘ TIP! Keep the shoulder belt at the position of belt guidance between the outside of the neck and shoulder (in the middle of point a and point b).

ⓘ TIP! The importance of ensuring that any lap belt is worn low down, so that the pelvis is firmly engaged.

ⓘ TIP! The shoulder belt section must run diagonally backward. You can adjust the course of the belt with your vehicle's ALR on both sides.

ⓘ TIP! 100-150cm, Turn off the switch by sliding it to the left.

Battery

Open the battery cover with your hand. The battery must be installed in its designated position. The text needs to be face up. The battery should be underneath the gold positive electrode, insert the battery at the angle of 45°, the battery must not fall off. This is the correct installation. Then closed the panel by installing the battery cover.

8. Clean

Seat cover

Only use authentic Travii Compact Fold [Seat Cover \(4\)](#). The [Seat Cover \(4\)](#) is an integral part of the child safety seat and is key to ensure the trouble free functionality of the system. Replacement [Seat Cover \(4\)](#) are available from

The [Shoulder Pads \(6\)](#), [Seat Cover \(4\)](#) can be washed in luke warm soapy water. Remove all foam parts from the top and bottom sections before washing. These must not be washed.

Harness Buckle

1. Open the [Harness Buckle \(8\)](#) as shown. Remove [Crotch Pad \(9\)](#).
2. Lift the seat cover, pull down [Harness Buckle \(8\)](#) across [Seat Cover \(4\)](#).
3. Rotate the metal plate on Adjustment Straps from (F) by 90° vertically.

Slide the metal plate through the harness slot in the way (E) lies in horizontal position, then [Harness Buckle \(8\)](#) can take out from slot (D). To re-install [Harness Buckle \(8\)](#) follow the steps in reverse order, until the metal plate is hooked into the harness slot. Thread the [Harness Buckle \(8\)](#) through the [Crotch Pad \(9\)](#) on the cover. Make sure the metal plate under slot (F) when you are using.

⚠ CAUTION! Tug hard on the Adjustment Strap to make sure that it is secure in the seat shell.

To ensure the safety of your child, it is absolutely essential that the [Harness Buckle \(8\)](#) continues to function correctly. [Harness Buckle \(8\)](#) malfunctions are usually caused by a build-up of soiling or by external objects:

When you press the [Red Release Button \(16\)](#), it takes a long time for the [Buckle Tongues \(15\)](#) to be ejected.

The [Buckle Tongues \(15\)](#) no longer engage (i.e. when you try to push them in, they pop out again).

The [Buckle Tongues \(15\)](#) engage without a clicking sound.

The [Buckle Tongues \(15\)](#) are difficult to push in (you feel a certain amount of resistance).

The [Buckle Tongues \(15\)](#) only opens if extreme force is applied.

Remedy: Soak the harness buckle in warm water containing washing-up liquid for at least an hour. Rinse the buckle thoroughly and dry it.

The plastic parts and the harnesses can be cleaned with soapy water. Do not use any caustic cleaning agents (such as solvents).

DISPOSAL

Please observe the waste disposal regulations in your country.

Disposal of packaging	Container for cardboard boxes
Seat cover	Residual waste, waste incineration
Plastic parts	To be placed in the corresponding container according to labelling
Metal parts	Container for metals
Belt straps	Container for polyester
Buckle and tongue	Residual waste

SAFETY NOTES

NOTICE

Notice regarding i-Size category Enhanced Child Restraint Systems (76-105 cm)

This is an i-Size Enhanced Child Restraint System. It is approved according to UN Regulation No. 129 for use in i-Size compatible vehicle seating positions as indicated by vehicle manufacturers in the vehicle user's manual. If in doubt, consult either the Enhanced Child Restraint System manufacturer or the retailer.

Notice regarding i-Size booster seat category Enhanced Child Restraint Systems (100-150 cm)

This is an i-Size booster seat Enhanced Child Restraint System. It is approved according to UN Regulation No. 129 for use primarily in "i-Size seating positions" as indicated by vehicle manufacturers in the vehicle user's manual. If in doubt, consult either the Enhanced Child Restraint System manufacturer or the retailer.

DANGER!

Please carefully read and make sure you understand all instructions in this manual and in the vehicle handbook relate to child safety seats. Install and use the child safety seat as described in the instruction manual. Failure to do this could result in serious injury even death of your child. Keep the instructions together with the ECRS for future reference.

MAKE SURE any straps holding the ECRS to the vehicle should be tight. Any straps restraining the child should be adjusted to the child's body. Make sure straps should not be twisted.

MAKE SURE the lap vehicle seat belt must be worn in such a way as to properly secure the pelvis of the child.

MAKE SURE the ECRS is changed when it has been subject to violent stresses in an accident.

Ensure the rigid items and plastic parts of an Enhanced Child Restraint System (ECRS) are located and installed

so they are not likely, during everyday use of the vehicle, to become trapped by a movable seat or in a door of the vehicle.

DO NOT make any alteration or additions to the ECRS without the approval of the Type Approval Authority, or a danger occurs if not following closely the installation instructions provided by the child restraint manufacturer.

HOT! The child seat should be kept away from sunlight if the seat is not provided with a textile cover, otherwise it may be too hot for the child's skin.

DO NOT leave your child unattended in this restraint even for a short time.

MAKE SURE any luggage or other objects liable to cause injuries in the event of a collision shall be properly secured.

A) DO NOT use the ECRS without the cover.

B) DO NOT replace seat cover with any other than the one recommended by the manufacturer, because the cover constitutes an integral part of the restraint performance.

DO NOT use before the child's age exceeds 15 months (refer to instructions).

WARNING!

The safest place for your baby is the rear of your car.

However, if you need to install the seat in the front passenger seat, please ensure that the airbag is deactivated. Airbags are fatal hazards to young childrens.